

# Posey Wireless Chair Sensor Pad 8309WL

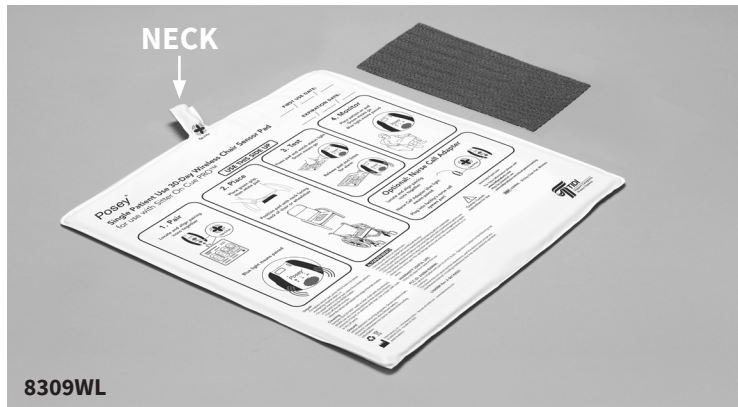
## Instructions for Use



**Description of Product:** The chair sensor is compatible with the wireless On Cue® **PRO** fall monitor and is 30-day single-patient use.

**Intended Use:** The Posey Wireless Chair Sensor Pad is intended to be used with the On Cue® **PRO** Wireless Fall Monitor to alert caregivers when a fall risk patient exits the chair.

**Contraindications:** None



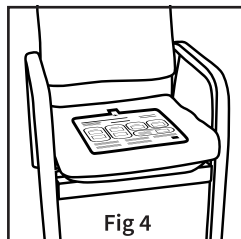
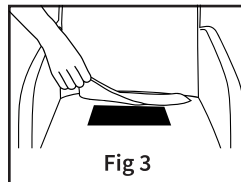
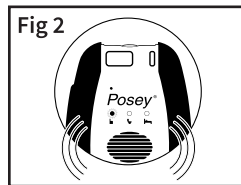
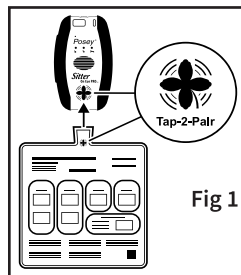
### Instructions:

#### 1. Pair Sensor Pad to Fall Monitor

- Locate and align pairing icons together (Fig 1). Hold until beep is heard.
- Once beep is heard, the blue light above the chair icon on fall monitor will illuminate (Fig 2).

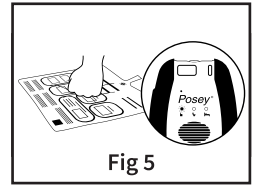
#### 2. Place Sensor Pad

- Mark sensor with date of first use and expiration date (30 days) in permanent marker to ensure sensor pad is used within warranty period.
- Check that sensor pad is clean and not damaged. Discard and replace damaged sensor pads.
- Place green non-slip grip matting (if applicable) across the width of seat.
- Place sensor pad on top of grip matting with neck toward back of seat (Figs 3 and 4).
  - If a seat cushion is used, place sensor pad on top of cushion.
  - Incontinence pads may be used to protect the sensor pad from liquids. Sensor pad may fail if any liquid enters at neck of sensor.
  - Make sure sensor pad neck is clear and not blocked. Air must flow freely in and out of sensor pad to function properly.
  - When other objects are in chair such as restraints, personal items, or other patient care products, the weight of these objects could result in no alarm. Straps or other weight bearing patient care products must not cross over or be placed on top of sensor pad.



#### 3. Test Sensor Pad

- Before each use, ensure sensor pad and fall monitor are properly functioning.
  - Make sure fall monitor is on and sensor is paired.
  - Press sensor pad. Listen for beep and audio cue. Green means go.
  - Releasing pressure should cause the Posey Fall Monitor to alarm. Test multiple locations on sensor pad to ensure proper functionality.
  - If Posey Fall Monitor fails to alarm, test with new sensor pad. If fall monitor still fails to alarm, reference Posey Fall Monitor's Instructions for Use.



#### 4. Monitor patient

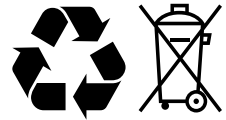
- Place patient on pad, ensuring pad is under the patient's buttocks when seated.

#### 5. Unpair Sensor Pad

- To replace sensor pad, press HOLD button to pause monitoring. Repeat steps 1-4 with new sensor pad.
- To unpair inactive sensor, select from these options:
  - Press and hold the MODE button for 2 seconds.
  - Turn off the fall monitor.
  - Move the sensor pad outside the range of the fall monitor.

#### 6. Discard

- Dispose of per facility policy. Be sure to follow all laws that apply.
- Sensor pad houses lithium battery that should be disposed of per facility policy.
- Do not attempt to replace batteries.
- Recycling of unsoiled sensors is encouraged, please utilize electronic recycling programs.\*
- Reprocessing voids warranty.



*Perchlorate Material - special handling may apply, See <http://www.dtsc.ca.gov/hazardouswaste/perchlorate>.*

*\*Note: Some facilities and situations may arise that consider a sensor pad medical waste; please dispose of per your facility's policy.*

**Cleaning:** Dampen (but DO NOT soak) a clean cloth with disinfectant. Use extra care to clean sensor pad. To reduce the risk of damage, NEVER use any cleaning substance that contains Phenol, immerse in liquid, or sterilize with heat. Use a clean, DRY cloth to dry all parts.

**Storage:** Store in ambient temperatures and humidity levels (10-50%). Do not store product folded or creased.

**Warranty / Useful Life:** This product is warranted and has a useful life of thirty (30) days from date of first use.

**WARNING:** Failure to follow these instructions could result in serious injury.

- Designed for chair or wheelchair use only.
- Ensure all parts of the system are operational before leaving patient unattended. Failure to follow these instructions could result in serious injury.
- This system does not prevent falls or injury from falls and is not a substitute for patient care. This product should be used in conjunction with your facility's falls management program.
- Never crease sensor pad. This will damage sensor pad and may cause false alarms or no alarm.
- Replace sensor pad if liquid is observed in or near neck air intake.
- This device complies with Part 15 of the FCC Rules. Operation is subject to the following two conditions: (1) This device may not cause harmful interference, and (2) This device must accept any interference received, including interference that may cause undesired operation.
- Changes or modifications not expressly approved by TIDI could void the user's authority to operate the equipment.

May be patented: see [tidiprotects.com/virtual-patent-marking](http://tidiprotects.com/virtual-patent-marking)

Learn more and access the Instructions For Use video by scanning the QR code.

The complete Posey Fall Monitor and sensor manuals can be found at [tidiprotects.com/IFU](http://tidiprotects.com/IFU)



TIDI Products, LLC • 570 Enterprise Drive • Neenah, WI 54956 USA  
[tidiprotects.com](http://tidiprotects.com) • Tel 1.800.521.1314 • Fax 1.800.767.3933

M7008 Rev D 031924

© 2024 TIDI Products, LLC. All rights reserved. On Cue and Posey are registered trademarks of TIDI Products, LLC.

